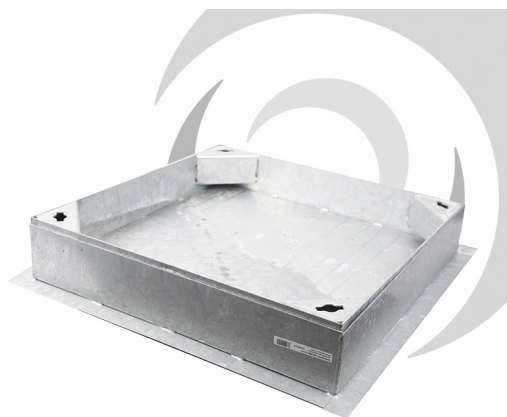


08 MANHOLE COVERS & FRAMES**Name**

BLOCK PAVIOR Cover: 750 x 750 x 100mm;
Galvanised Frame - 10 ton GLVW

Code

DR7575/A

Description

750x750mm Square Galvanised mild steel Block Pavior cover. 100mm recess for use with up to 80mm blocks.

Reinforced lifting keyways to help avoid distortion when lifting.

Steel frames have superior adherence to bedding mortar than plastic frames.

Galvanised to BS EN ISO 1461

External size: 900x788mm x 105mm

Loading: 10 ton GLVW (FACTA AAA)

External Dimensions

900x750mm

Clear Opening

750x750mm

Tray Depth

100mm