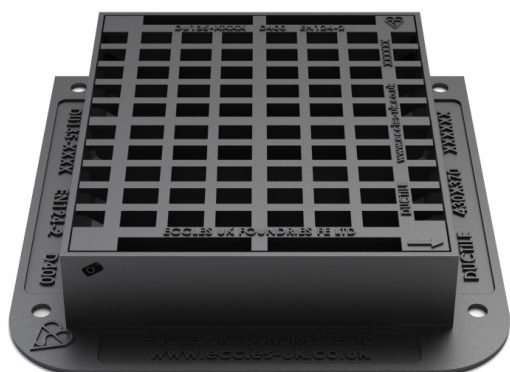


08 MANHOLE COVERS & FRAMES



Name

Name

Ductile Iron Gully Grate: 430 x 370mm; D400
Pedestrian Style Grate. Frame Size 520 x 520mm

External Dimensions

530x520mm

Code

KD50DP

Clear Opening

430x370mm

Description

430x370mm Ductile Iron Traffic Flow Hinged Grate & Frame. 40 ton (D400) loading.

For use in areas where cars and lorries have access, including carriageways, hard shoulders and pedestrian areas.

Pedestrian friendly grate.

Kitemarked: meets the requirements of EN124:2:015, tested and certified by the BSI.

Spheroidal graphite cast iron according to EN 1563, as per the requirements of EN124-2:2015.

Designed and engineered for group 4 areas with high rainfall. Providing a high waterway allowing for an increased water flow.

Base size: 510x510mm x 100mm

Load Rating

D400