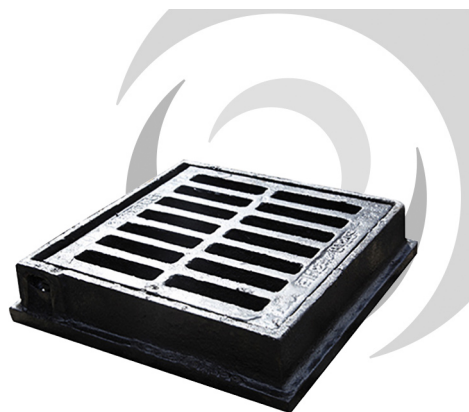


### 08 MANHOLE COVERS & FRAMES



#### Name

#### Name

Ductile Iron Gully Grate: 225 x 225mm; B125 FLAT

#### External Dimensions

280x265mm

#### Code

KD71

#### Clear Opening

225x225mm

#### Description

225x225mm Gully Grating Hinged Ductile Iron.  
Medium duty - load class: B125 flat.  
Compliant with BS EN 124:2015.  
Third party certified by BSI.  
Captive hinges reduce risk of theft and allow easy access for cleaning.  
Large waterway area.  
Manufactured from strong and highly durable ductile iron.  
Hinged product for ease of access.  
Three flanges - for placement against kerb edge.

#### Load Rating