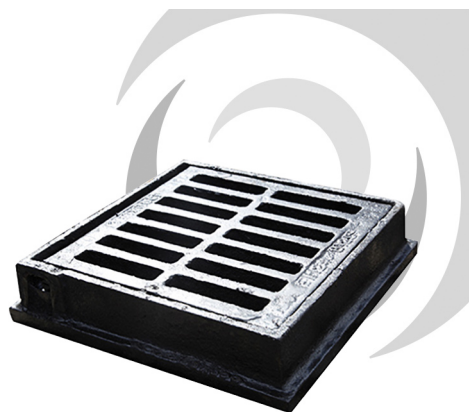


**08 MANHOLE COVERS & FRAMES****Name**

DISHED Iron Gully Grate: 300 x 300mm; C250  
Ductile Hinged.

**Code**

KD73C

**External Dimensions**

378x378mm

**Clear Opening**

300x300mm

**Description**

300x300mm Hinged Ductile Iron Gully Grate &  
Frame.

25 ton (C250) loading, for use in areas where not  
extending more than 500mm from curb face into  
carriageway.

Kitemarked: Meets the requirements of EN124-2:015,  
tested and certified by the BSI.

Spheroidal graphite cast iron according to EN 1563,  
as per the requirements of EN124-2:2015.

Base size: 380x380mm x 70mm