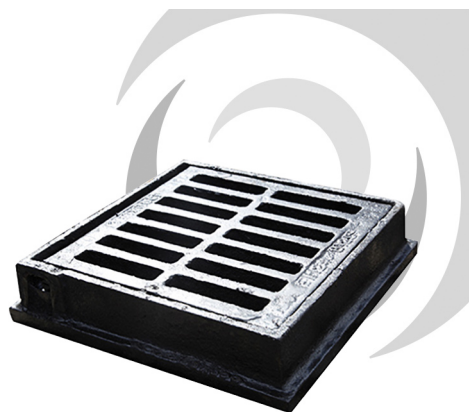


08 MANHOLE COVERS & FRAMES



Name

Name

FLAT Iron Gully Grate: 300 x 300mm; B125 Ductile Hinged

Code

KD73F

Description

300x300mm Gully Grating Hinged Ductile Iron.
Medium duty - load class: B125 flat.
Compliant with BS EN 124:2015.
Third party certified by BSI.
Captive hinges reduce risk of theft and allow easy access for cleaning.
Large waterway area.
Manufactured from strong and highly durable ductile iron.
Hinged product for ease of access.
Three flanges - for placement against kerb edge.

External Dimensions

360x345mm

Clear Opening

300x300mm

Load Rating