

multiV+® 150							
External width : 186mm Internal width : 150mm Length (L) : 1000mm							
Channel reference:	Total height		Internal height		Hydraulic section (cm ²)	Ø outlet(mm)	
	h (mm)	H (mm)	a (mm)	b (mm)		Vert.	Horiz.
R150G00R	170	170	128	128	156	160	-
R150G10R	220	220	178	178	218	160	-
R150G11	220	225	178	183	225.5	160	-
R150G12	225	230	183	188	232	160	-
R150G13	230	235	188	193	238	160	-
R150G14	235	240	193	198	244.5	160	-
R150G15	240	245	198	203	251	160	-
R150G16	245	250	203	208	257.5	160	-
R150G17	250	255	208	213	264	160	-
R150G18	255	260	213	218	270	160	-
R150G19	260	655	218	223	276.5	160	-
R150G20	265	270	223	228	283	160	-
R150G20R	270	270	228	228	283	160	-
R150G30R	320	320	278	278	350	160	-

Review: 2016-06

ULMA Architectural Solutions reserves the right to modify the specifications of any of its products without prior notice.

Information about the shown products is only indicative and is based on the existing technical features at the time of issuing.

In the event of any discrepancy in the translation of this document into different languages, the Spanish version will be used.

Latest version in www.ulmaarchitectural.com

For more details, see technical sheets and installation guide.

Description

ULMA polymer concrete linear drainage channel model multiV+® R150G. Self-cleaning optimized V-shaped V+ section.

Protective galvanized steel edge with a real thickness of 2+2 mm, smooth, without breakage of the protective zinc layer, avoiding water accumulation and preventing corrosion.

Boltless locking system ULMA Rapidlock®, 8 fixing points per lm for higher mechanical stability.

Load class up to D400, EN 1433 Standard.

CE Conformity Declaration and compliance with EN 1433 Standard.

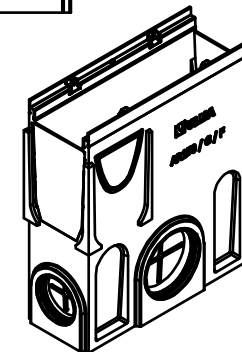
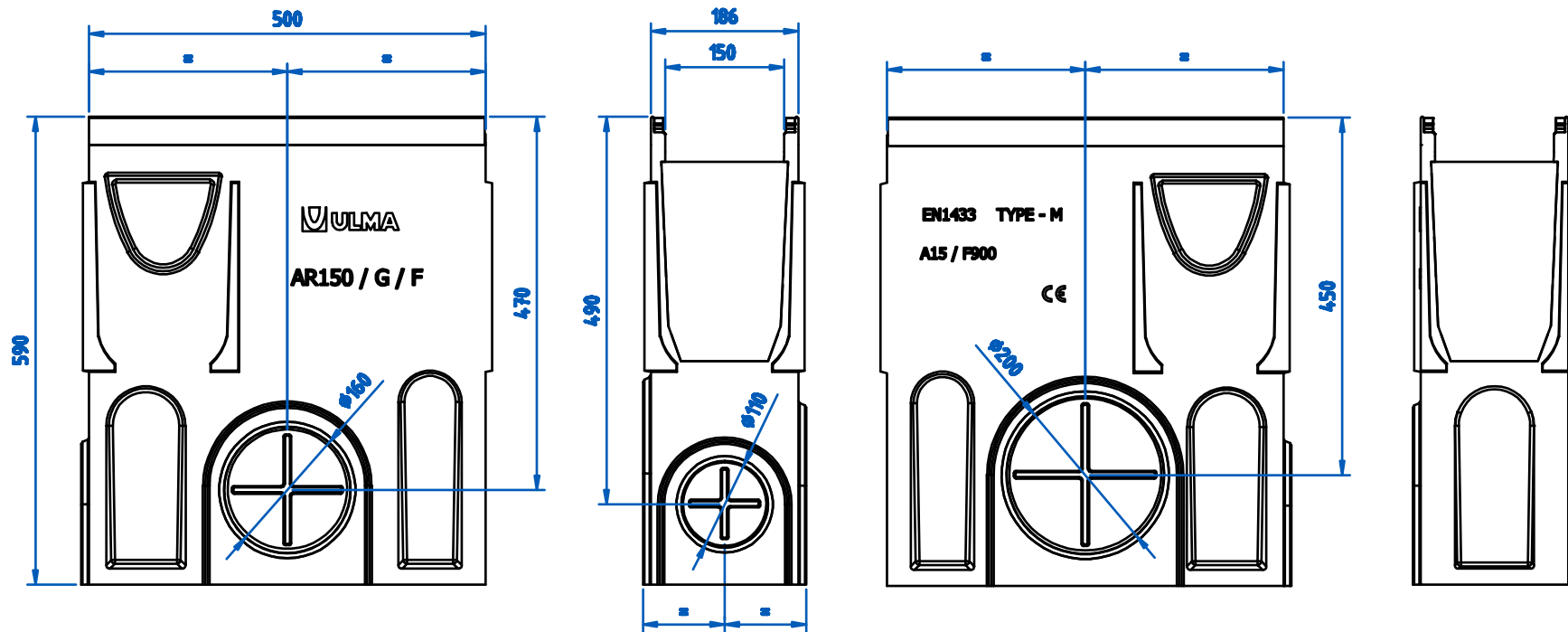
External width 186 mm, internal width 150mm and total length 1000mm. Total external heights available between 170mm and 320mm. Installation possible with no slope, 0.5% presloped, stepped fall or mixed slope.



ARCHITECTURAL SOLUTIONS



Tel.: +34 943 78 06 00
info@ulmaarchitectural.com
ulmaarchitectural.com



Review: 2013-04

ULMA Architectural Solutions reserves the right to modify the specifications of any of its products without prior notice.

Information about the shown products is only indicative and is based on the existing technical features at the time of issuing.

In the event of any discrepancy in the translation of this document into different languages, the Spanish version will be used.

Latest version in www.ulmaarchitectural.com

For more details, see technical sheets and installation guide.

Description

ULMA multiV+® Polymer concrete linear drainage sump unit model AR150G.

Compatible with self-cleaning optimized V-shaped V+ section channels.

Protective galvanized steel edge with a real thickness of 2x2 mm, smooth, without breakage of the protective zinc layer, avoiding water accumulation and preventing corrosion.

Boltless locking system ULMA Rapidlock®, 8 fixing points per lm.

Clase de Carga hasta D400, según norma EN 1433, sin utilización de armadura de refuerzo.

Vertically and horizontally aligning tongue and groove joints.

CE Conformity Declaration and compliance with EN 1433 Standard.

Total height 590 mm, internal width 150 mm, total width 186 mm and total length 500 mm.

ø110 mm, ø160 mm and ø200 mm preformed knockouts with triple lipped seals for water tight connection.

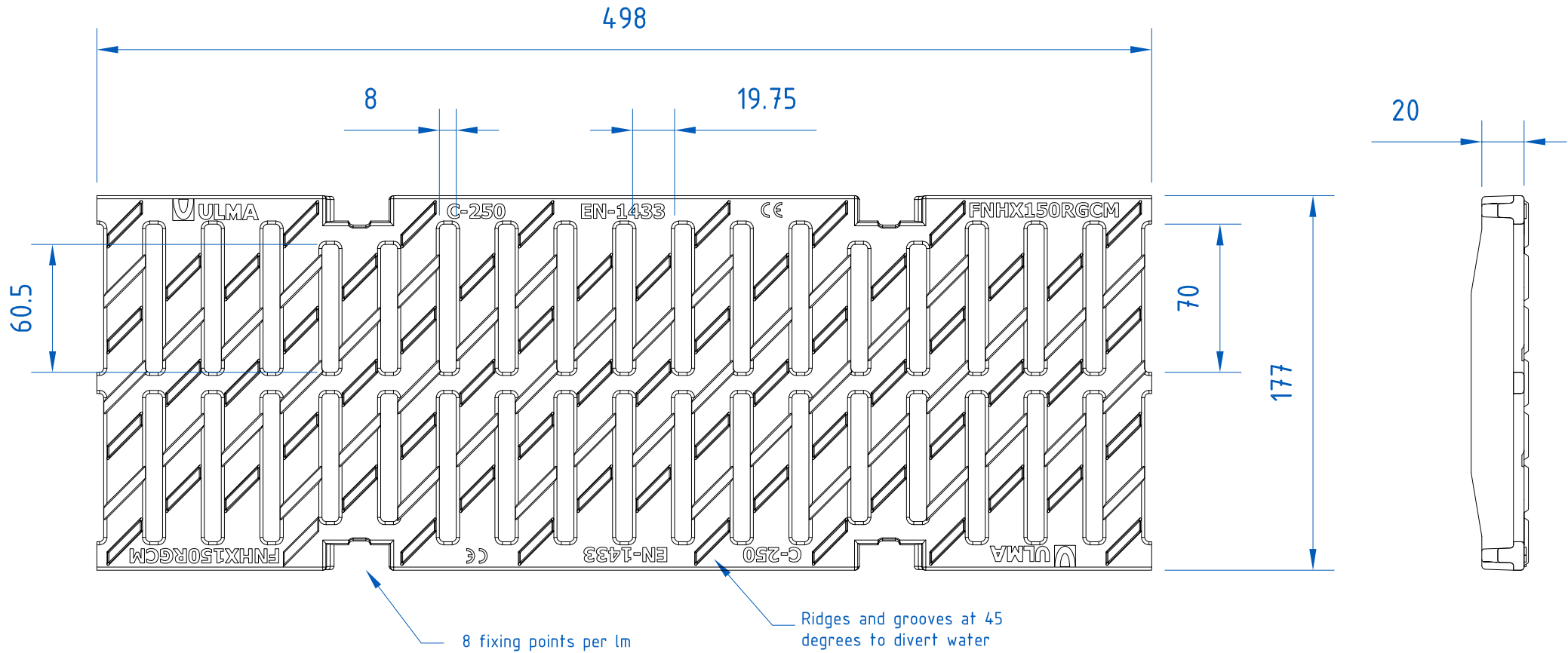
CR150 bucket compatible.

ULMA

ARCHITECTURAL SOLUTIONS

**DRAINAGE
SYSTEMS**

Tel.: +34 943 78 06 00
info@ulmaarchitectural.com
ulmaarchitectural.com



Review: 2013-04

ULMA Architectural Solutions reserves the right to modify the specifications of any of its products without prior notice.

Information about the shown products is only indicative and is based on the existing technical features at the time of issuing.

In the event of any discrepancy in the translation of this document into different languages, the Spanish version will be used.

Latest version in www.ulmaarchitectural.com

For more details, see technical sheets and installation guide.

Description

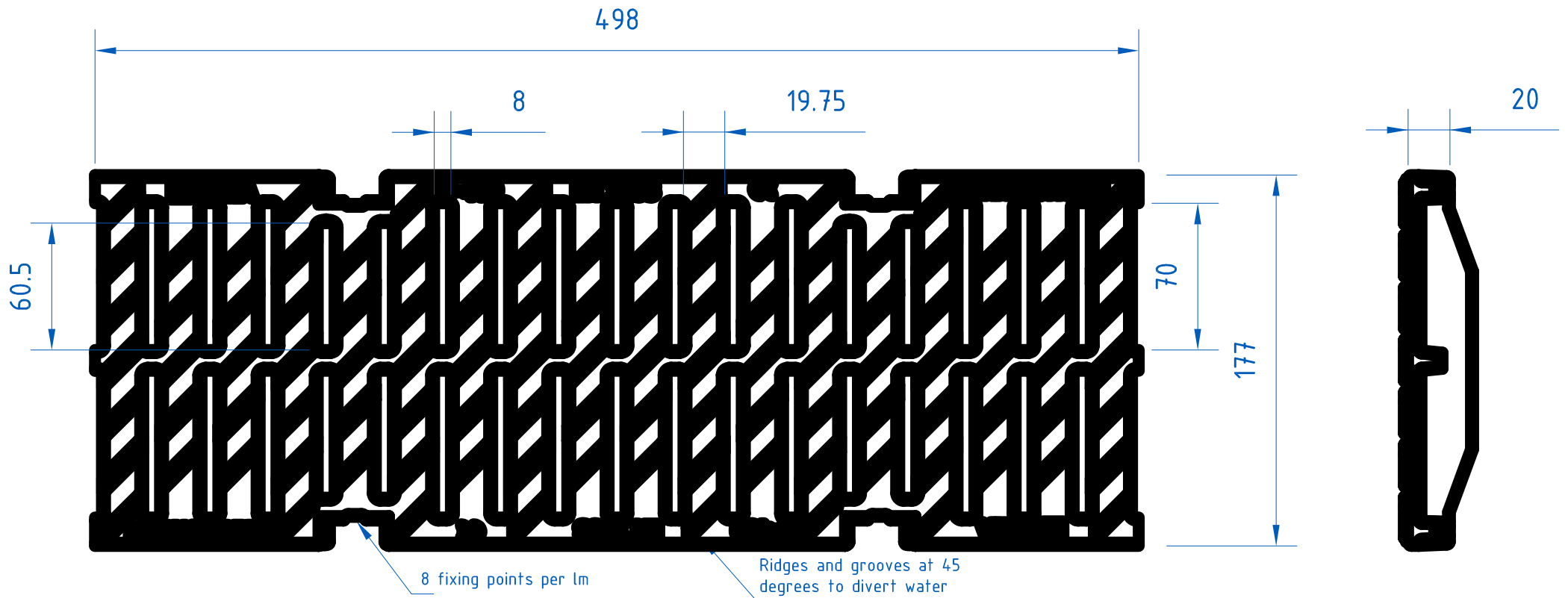
Non-slip slotted grating reference FNHX150RGCM.
 Casted espheroidal graphite ductile iron, EN 1563 Standard.
 Load class C250, EN 1433 Standard.
 Boltless locking system, 8 fixing points per lm.
 Bolt-locking system alternative.
 Ridges and grooves at 45 degrees to divert water.
 Walking stick and heel-safe slots.
 Water catching surface: 391 cm²/lm.



ARCHITECTURAL SOLUTIONS



Tel.: +34 943 78 06 00
 info@ulmaarchitectural.com
 ulmaarchitectural.com



Review: 2016-04

ULMA Architectural Solutions reserves the right to modify the specifications of any of its products without prior notice.

Information about the shown products is only indicative and is based on the existing technical features at the time of issuing.

In the event of any discrepancy in the translation of this document into different languages, the Spanish version will be used.

Latest version in www.ulmaarchitectural.com

For more details, see technical sheets and installation guide.

Description

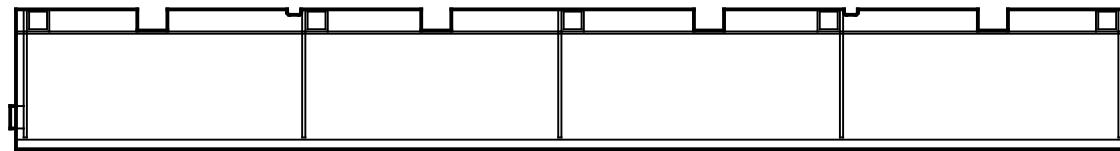
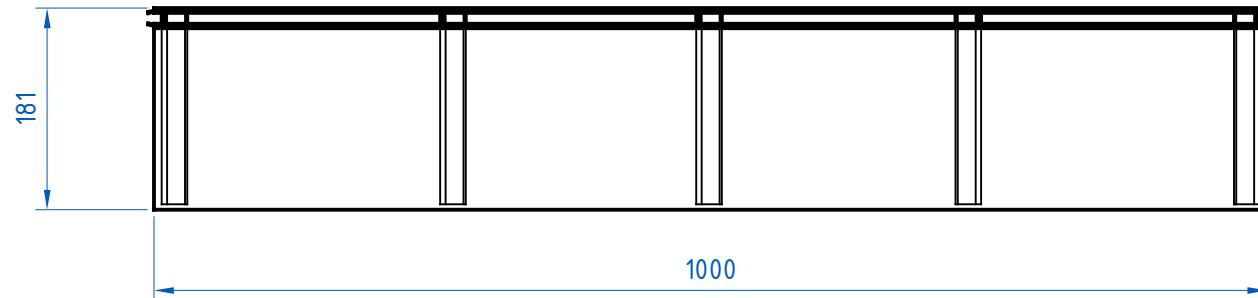
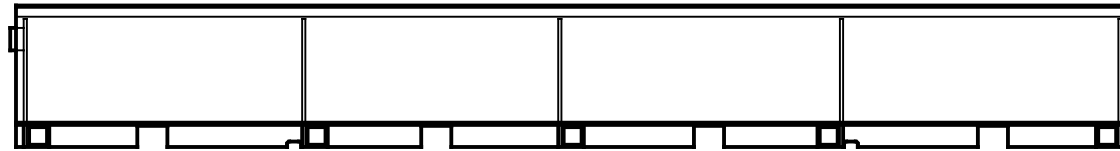
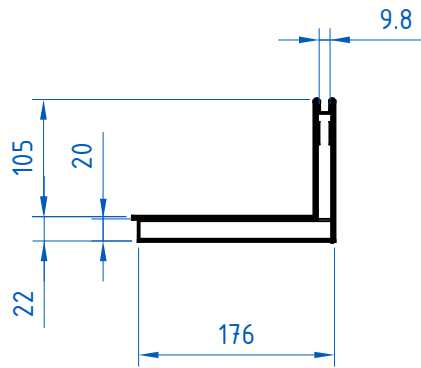
Non-slip slotted grating reference FNHX150RGDM.
 Casted espheroidal graphite ductile iron, EN 1563 Standard.
 Load class D400, EN 1433 Standard.
 Boltless locking system, 8 fixing points per 1m.
 Bolt-locking system alternative.
 Ridges and grooves at 45 degrees to divert water.
 Walking stick and heel-safe slots.
 Water catching surface: cm^2/lm .



ARCHITECTURAL SOLUTIONS



Tel.: +34 943 78 06 00
info@ulmaarchitectural.com
ulmaarchitectural.com



Review: 2018-04

ULMA Architectural Solutions reserves the right to modify the specifications of any of its products without prior notice.

Information about the shown products is only indicative and is based on the existing technical features at the time of issuing.

In the event of any discrepancy in the translation of this document into different languages, the Spanish version will be used.

Latest version in www.ulmaarchitectural.com

For more details, see technical sheets and installation guide.

Description

Single slot linear grating for underground installation, with a minimum visual impact reference GRL150R0D.

L-shaped galvanized steel grating to use over polymer concrete channels.

Load class up to D400, EN 1433 Standard.

Water catching surface: 98 cm²/lm.



ARCHITECTURAL SOLUTIONS



Tel.: +34 943 78 06 00
 info@ulmaarchitectural.com
ulmaarchitectural.com